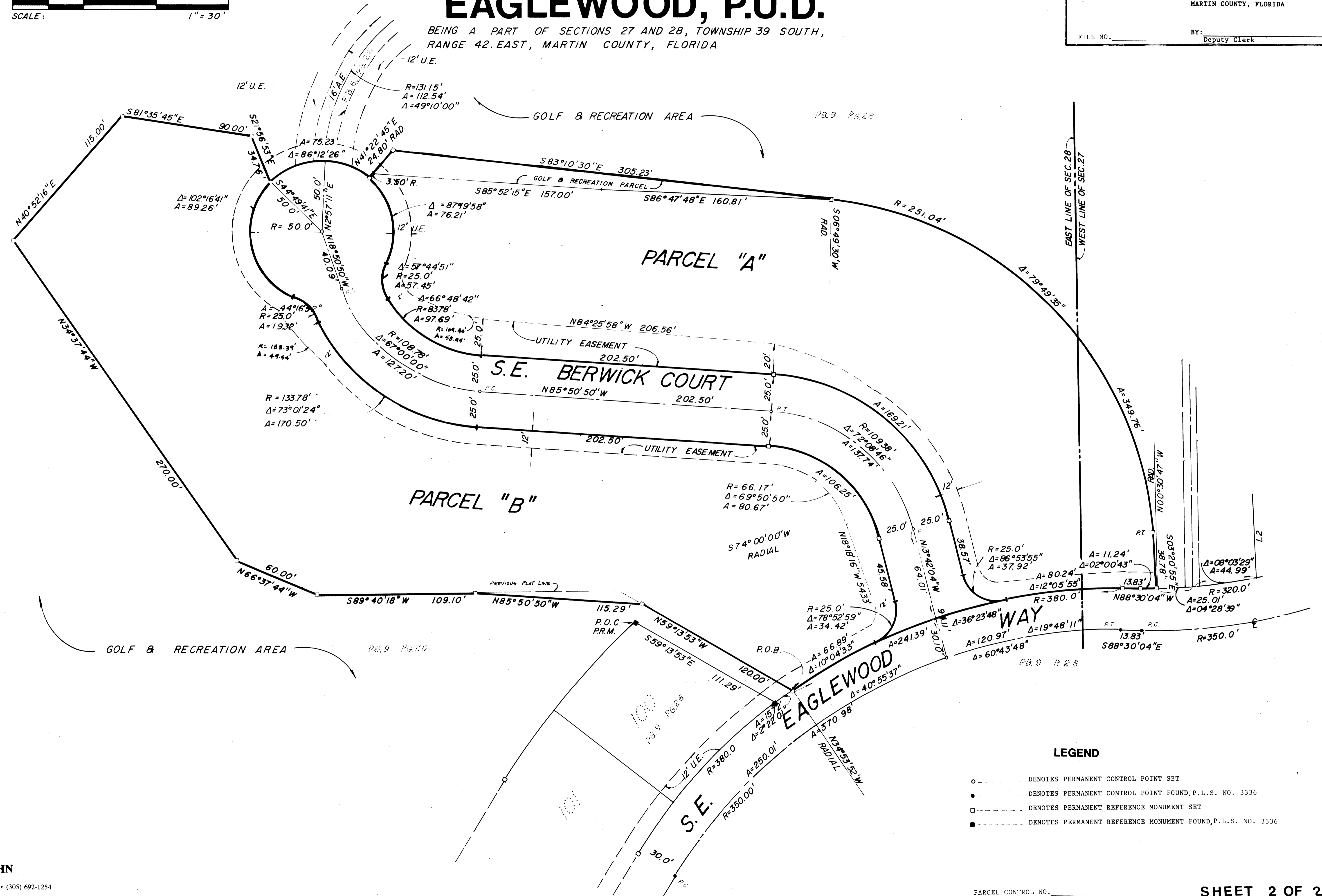
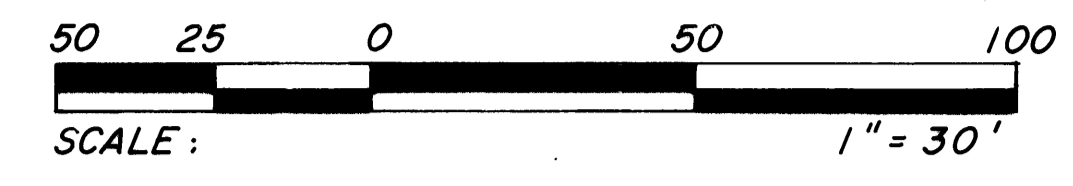


**CLERK'S RECORDING CERTIFICATE**  
 I, MARSHA STILLER, Clerk of the Circuit Court of Martin County, Florida, hereby certify that this plat was filed for record in Plat Book 10, Page 89, Martin County, Florida Public Records, this 14th day of 1987, A.D.  
 MARSHA STILLER CLERK  
 CIRCUIT COURT  
 MARTIN COUNTY, FLORIDA  
 FILE NO. \_\_\_\_\_ BY: \_\_\_\_\_  
 Deputy Clerk

# A SECOND REPLAT OF A PORTION OF EAGLEWOOD, P.U.D.

BEING A PART OF SECTIONS 27 AND 28, TOWNSHIP 39 SOUTH, RANGE 42. EAST, MARTIN COUNTY, FLORIDA



- LEGEND**
- DENOTES PERMANENT CONTROL POINT SET
  - DENOTES PERMANENT CONTROL POINT FOUND, P.L.S. NO. 3336
  - DENOTES PERMANENT REFERENCE MONUMENT SET
  - DENOTES PERMANENT REFERENCE MONUMENT FOUND, P.L.S. NO. 3336

**PHILIP W. LANGBEHN**  
 Professional Land Surveyor  
 1509 N.W. Lakeside Trail, Stuart, Florida 33494 • (305) 692-1254